

***Bow Concord I-93 Improvements
T-A000(018)
13742***

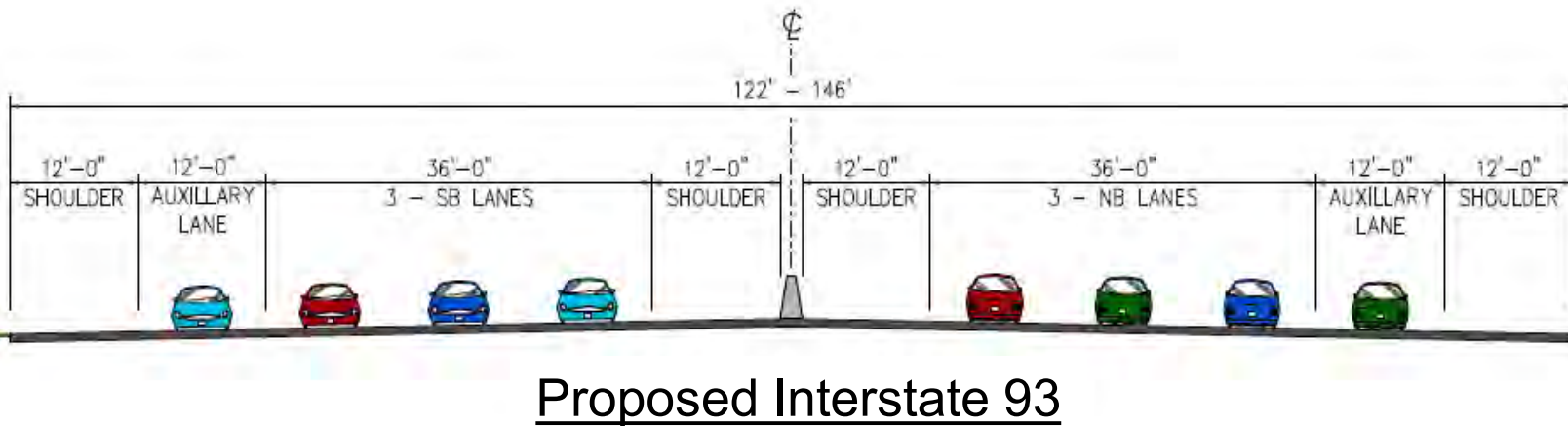
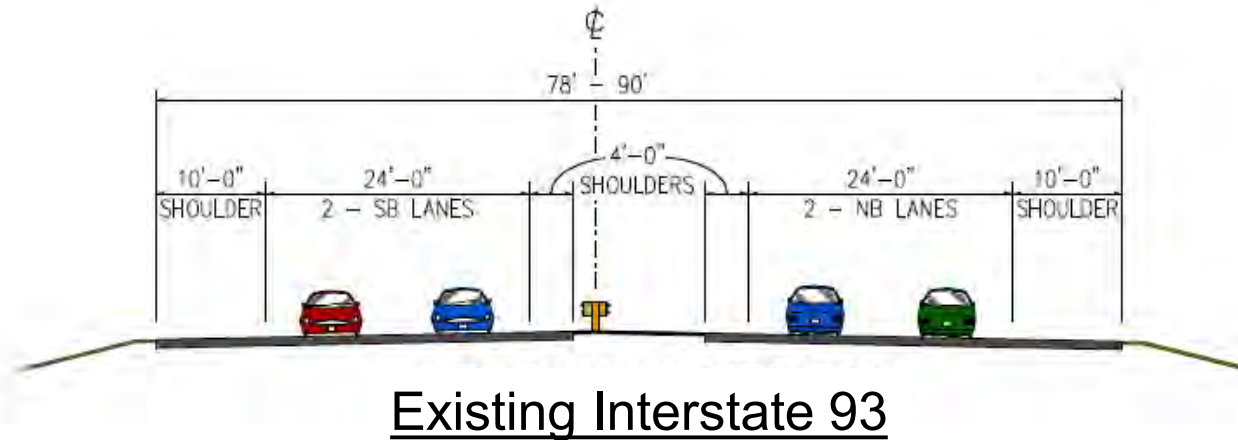
Alternatives Workshop

April 1, 2019

Project Overview



I-93 Typical Sections

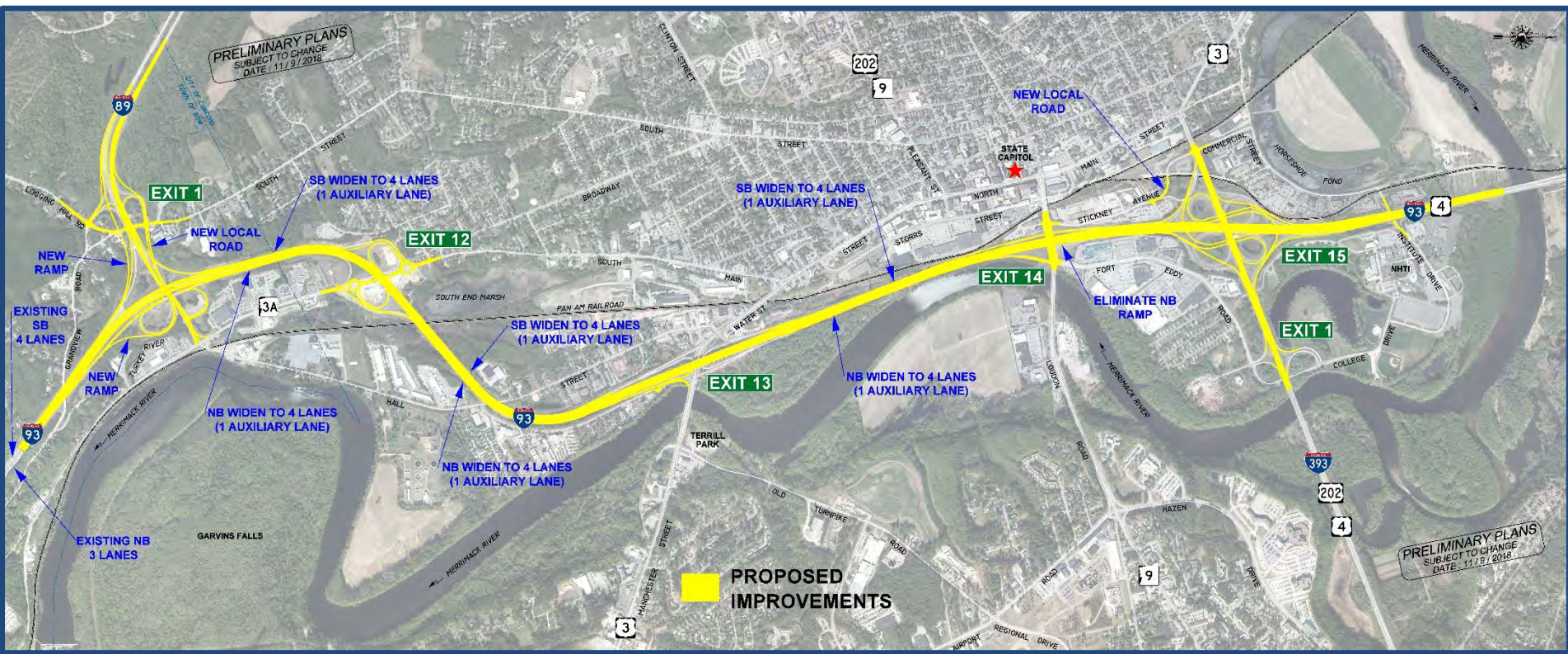


Project Goals



- Red List Bridges
- Address Geometric Issues
- Address Operational Issues
- Maintain Access
- Pedestrian/Bicycle Accommodation
- Provide Stormwater Treatment
- Minimize Resource Impacts
- Minimize Property Impacts

Recommended Preferred Alternative



**I-89 Area
Concept K**

**Exit 12 Area
Concept F**

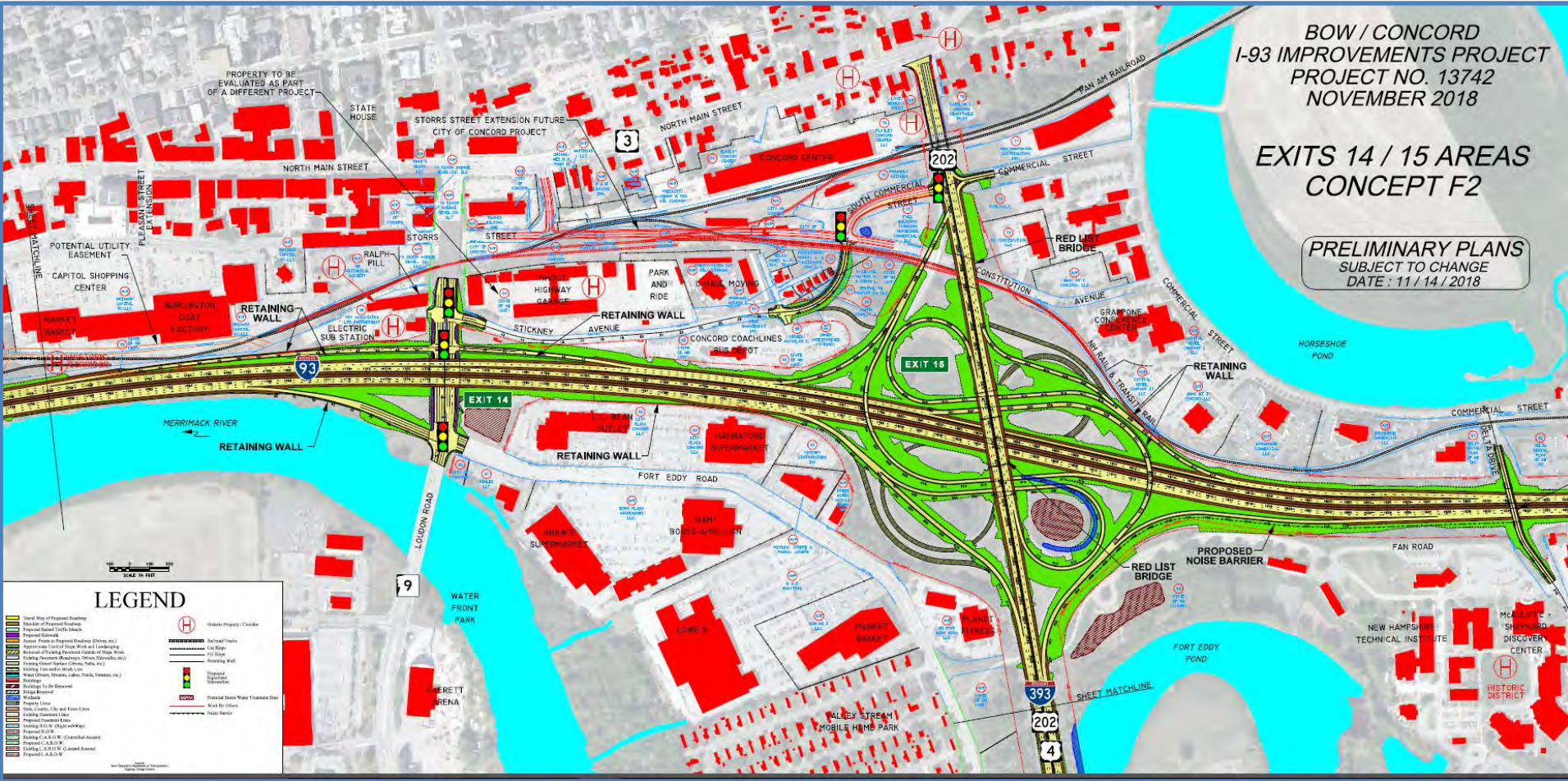
**Exit 13 Area
Concept B**

**Exit 14/15 Area
Concept F2**

Exit 14/15 Area

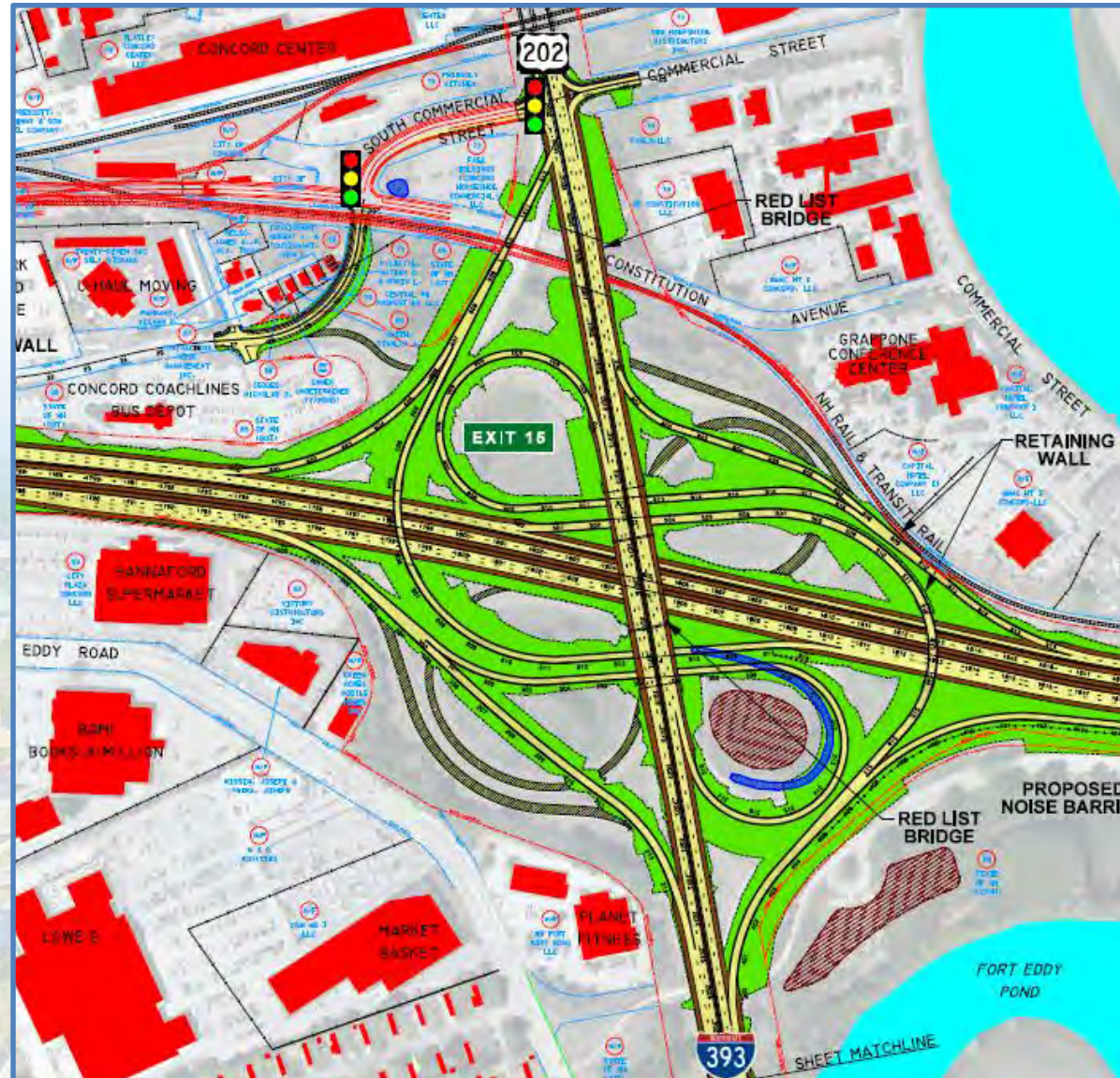


Exit 14 / 15 Area - Proposed



Exit 15 - Proposed

- Cloverstack
- Eliminates 2 Loop ramps
- Eliminates 4 weaves
- Maintains all Access



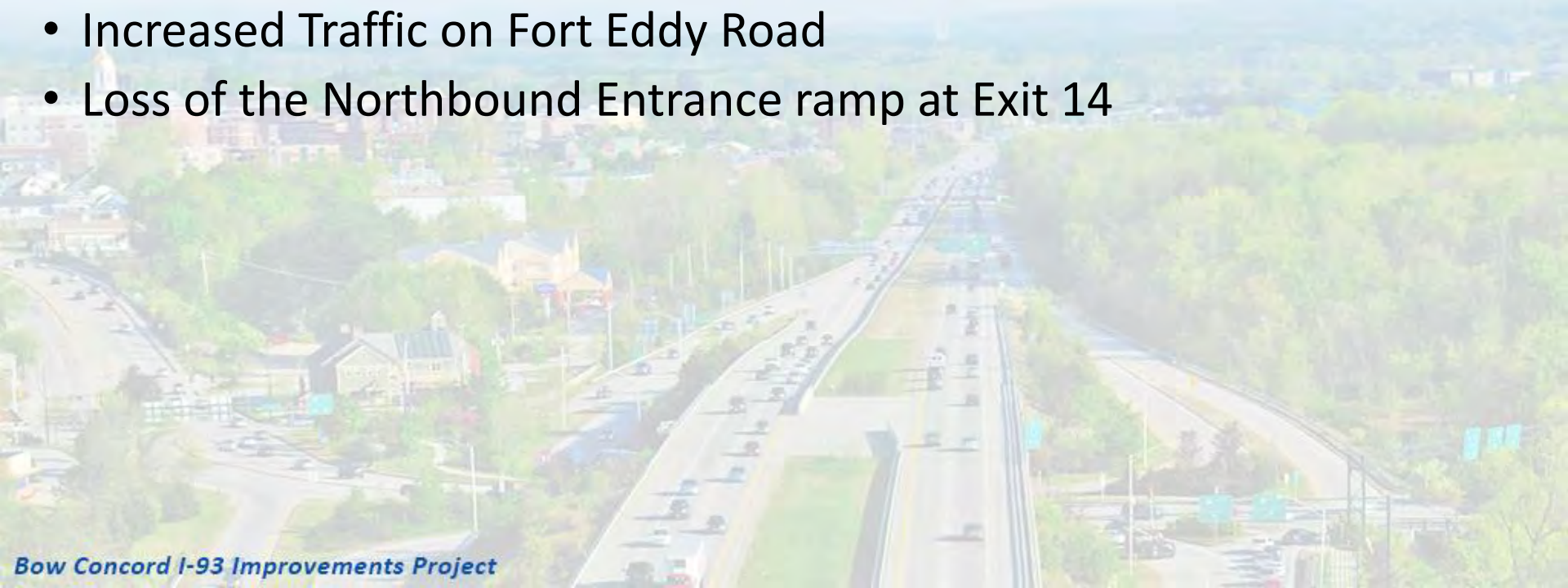
Exit 14 - Proposed



- Modified Diamond
- Eliminates Northbound Entrance Ramp
- Easterly shift of I-93
- Maintains access to Stickney Ave
- Avoids Historic Buildings
- Avoids Unutil Sub-station
- Avoids Railroad corridor

Comments/Concerns

- Clear brush along I-93
- Remove Highway Garage complex on Stickney Avenue
- Consistency with Concord's Vision for I-93
- Pedestrian Access from Downtown to the Merrimack River
- Increased Traffic on Fort Eddy Road
- Loss of the Northbound Entrance ramp at Exit 14



Open Discussion